

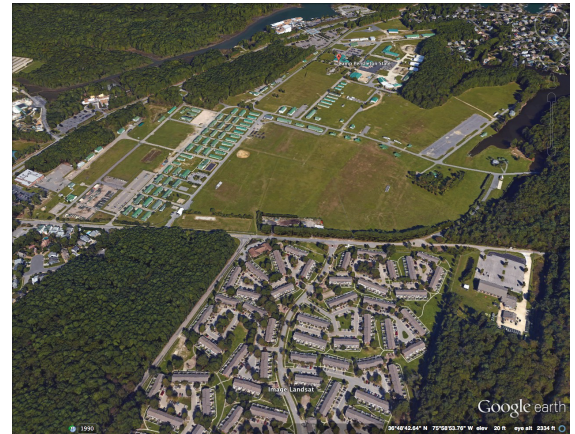
Clean Energy Development and Services (CEDS)



Property Information Sheet

Property or Site Name Camp Pendleton SMR Parcel
Address General Booth Blvd
City State Zip Virginia Beach, VA 23451
County Virginia Beach City

Property Size Acres 340.37 acres
GPS Coordinates 36.819020, -75.981008
Number of sites in Parcel 1
Annual Energy Usage (Parcel) 2,143,500
Utility Provider Dominion



Google Earth 3D Image

Area for Potential PV Installation 76.5 acres

Table 1: Solar PV Potential for Property.

Solar Array needed to meet Annual Kwh Demand	1.62 MW (1621 kW DC)
Number of 250 watt panels needed	6,485
Annual Solar Insolation at Site	4.83 (kWh/m2/Day)
Acres needed for Array (8 acre per MW)	13 acres

Site overview

The Camp Pendleton Parcel has several large open areas for consideration. The area is very flat and there are some wetlands on the property.

From Wikipedia:

The operation and maintenance of Camp Pendleton is funded primarily by the federal government through the National Guard Bureau, and its primary purpose is the training of personnel and organizations of the Virginia National Guard, as well as other states' National Guard units and components of the U.S. Armed Forces. When the facilities are not used by military organizations, state and local civilian agencies also conduct training at the site. Its facilities include a small arms range, helicopter landing strip, classrooms, barracks, dining halls, maintenance garages, training fields, and a chapel. Other tenants include the Military Sealift Command, whose facilities are leased to the federal government by the State of Virginia, and the 203rd RED HORSE Air National Guard.

Facilities within the Parcel

Camp Pendleton State Military Reservation

Nearby State Entities

None





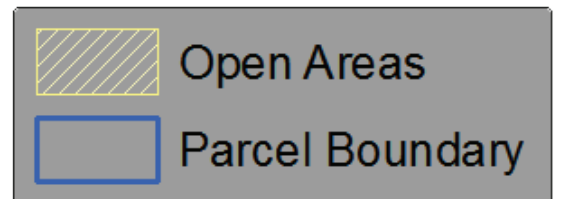
Terrain Slope Legend

- No Color 8% or Less
- 8 - 10 %
- 10-20% and up

- Open Areas
- Parcel Boundary



Esri ArcGIS Screenshot



Camp Pendleton SMR Parcel
General Booth Blvd
Virginia Beach, VA 23451
Virginia Beach City



Google Earth Screenshot

