

VDOT Solar Energy Development Project

Property Information Sheet



Property or Site Name Charlottesville Residency Complex
Address 701 VDOT Way
City State Zip Charlottesville, VA 22911
County Albemarle County

Property Size Acres 24.3 acres
GPS Coordinates 38.017717, -78.411403
Number of meters on site 2
Annual Energy Usage 158,920 kWh
Annual Demand Peak



Google Earth 3D Image

Table 1: Solar PV Potential for Property.

Solar array needed to meet annual kWh demand	0.14 MW (140.5 kW DC)
Number of 250 watt panels needed	562
Raw sq footage of solar panels	11,240 sqft
Sq footage of spaced solar panels	35,805 sqft
Roof sq footage available	15,389 sqft
Open area sq footage available	190,784 sqft

Site overview

The Charlottesville Residency in the VDOT Culpeper District, site has approximately 4.3 acres of open grassy space interspersed with trees and bushes. The rooftop area as measured by GIS is approximately 15,389 square feet. Interstate 64 is just north of the property.

Nearby State Entities

None

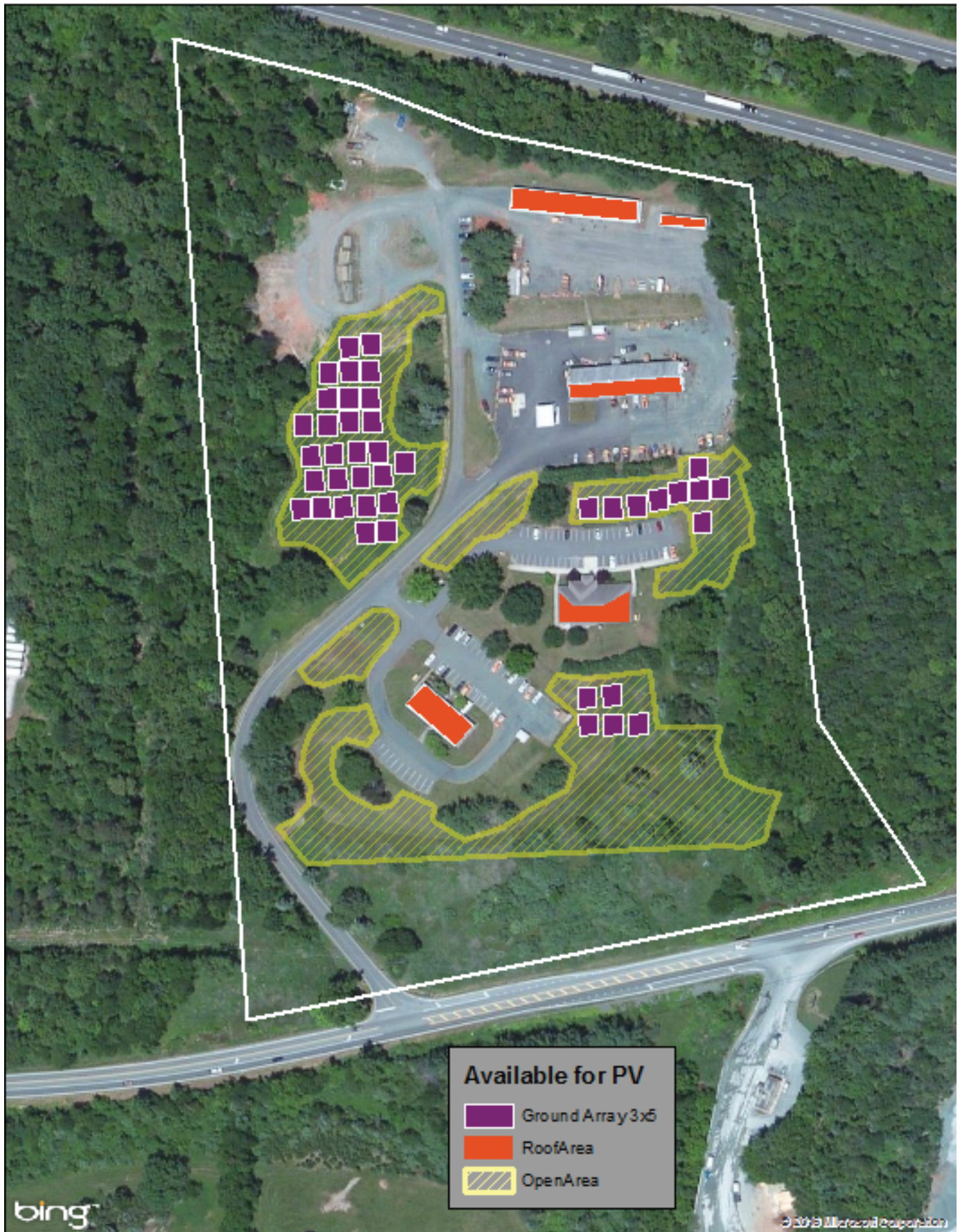
There do not appear to be any other state entities nearby that could benefit from extra power generation.

GIS Notes

The open areas can accommodate more than enough PV arrays to meet the energy demand (based on Dominion data). This example illustrates a possible array with 630 solar panels although the facility would only need approximately 562 to meet annual demand (shading will have to be assessed).

Each purple footprint represents a single ground-mount array of 15 solar panels and the appropriate shading to the next array (2.5 x panel height between arrays).

Final placement and orientation will be up to the solar installing company.



Charlottesville Residency Complex
701 VDOT Way
Charlottesville, VA 22911

