

## **Charlottesville, VA**

### **Project Summary**

As part of Virginia's State-Based Anemometer Loan Program, an anemometer was placed in Charlottesville, Virginia to assess the area's wind energy potential. Wind speed and direction were recorded from February 1, 2006 through January 31, 2007. Annual average wind speed during the monitoring period (66 ft. [20m] above ground level) was recorded to be 4.77 mph (2.13 m/s). Wind power density is calculated to be 17.7 W/m<sup>2</sup>.

### **Project Location**

The monitoring equipment was installed on private land in Hayes, Virginia at an elevation of 304.8 meters. The site is located at N 37° 46.45', W 77° 59.56'.

### **Monitoring Equipment**

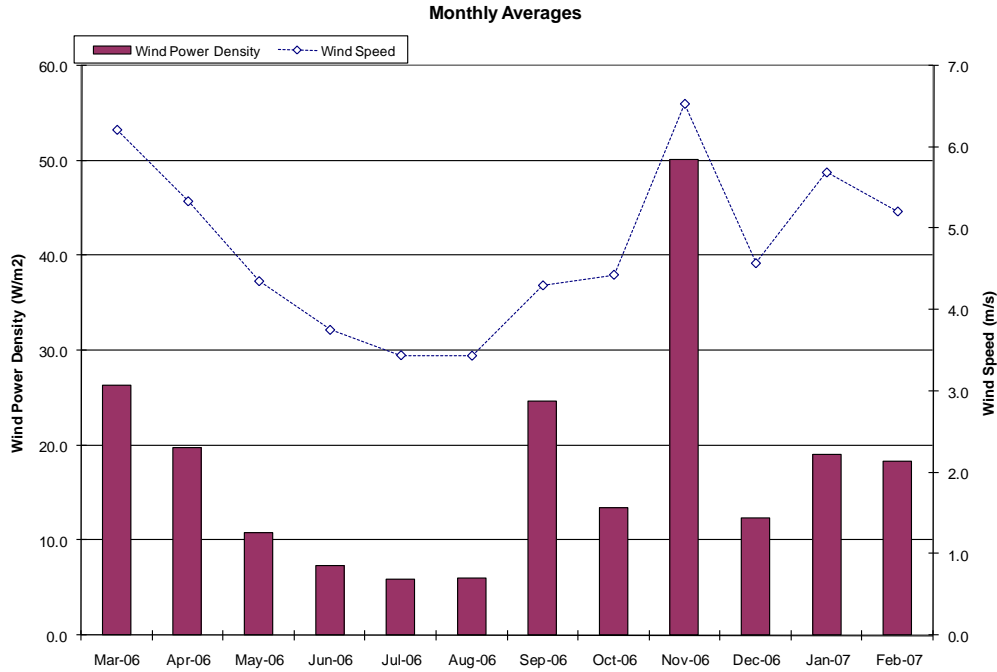
The 20-meter NRG-NOW Systems – Wind Explorer kit includes one tower, one Wind Explorer data logger with shelter box, one #40 Maximum anemometer, one #200P wind direction vane, sensor cabling, one lightning rod with copper ground, and two data plugs.

### **Results**

Average annual wind speed	4.77 mph (2.13 m/s)
Average annual wind power density	17.7 W/m <sup>2</sup>
Month with greatest wind resource	November
Average wind speed during month with greatest resource	6.5 mph
Month with least wind resource	July
Average wind speed during month with least resource	3.4 mph

## Monthly Variation

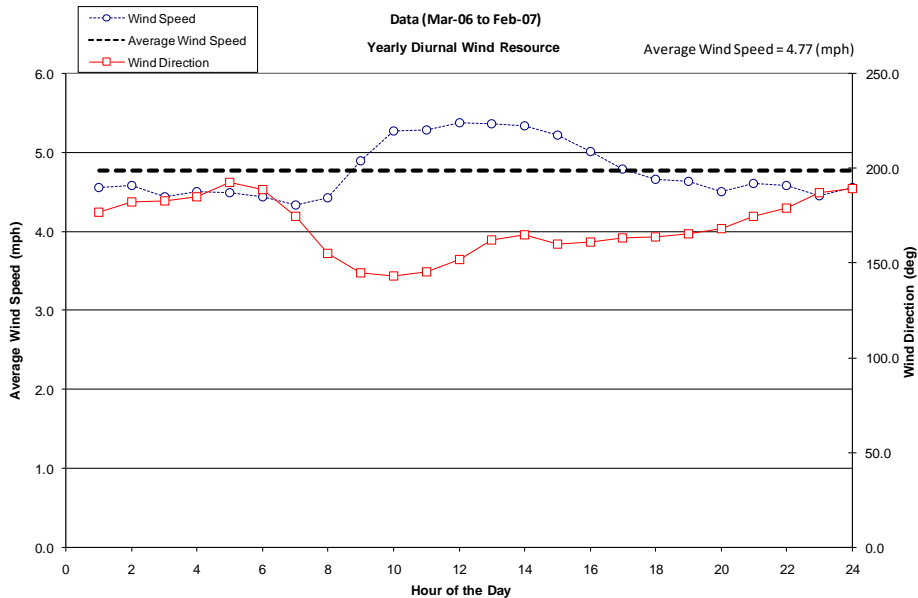
Figure E.7.1 below shows the average monthly wind speed for each month throughout the recorded year. Above average months occur during late fall and early spring, while below average months occur during summer.



**Figure E.7.1.** Monthly average wind speeds and power densities throughout the year.

## Diurnal Variation

Figure E.7.2 shows how wind speeds vary on an hourly basis. Stronger winds are more prevalent during afternoon and early evening hours. Slower winds more often exist after midnight and during sunrise.



**Figure E.7.2.** Average hourly wind speeds and directions throughout the year.

### Monthly Diurnal Variations

Figure E.7.3 shows the diurnal (hourly) variations of the wind speed over each month. The trends of each month follow one another.

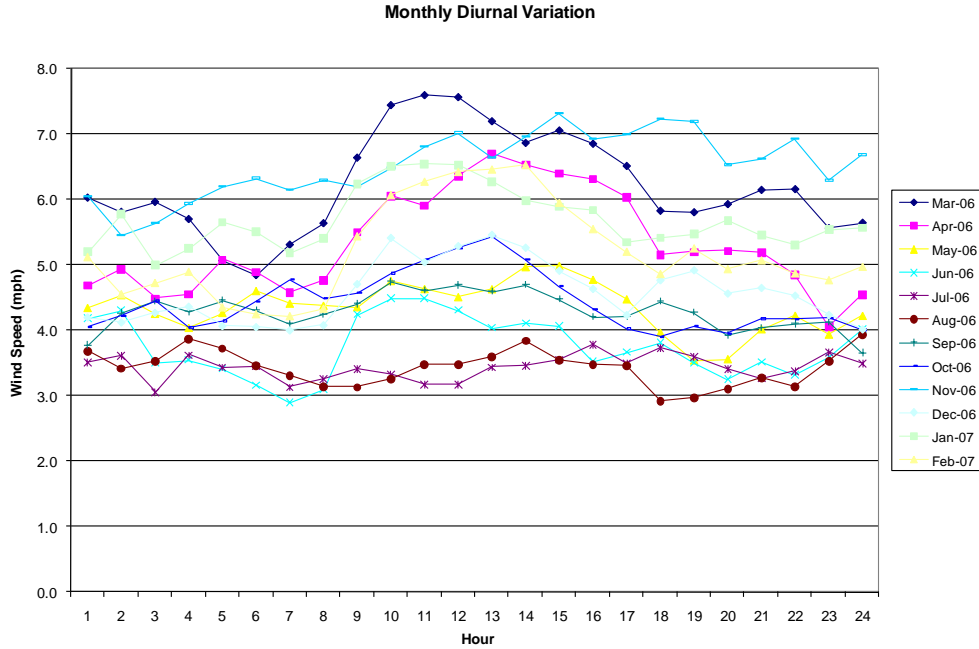


Figure E.7.3. Average hourly wind speeds for each month.

### Wind Speed Histogram

Figure E.7.4 shows the occurrence in number of hours that each wind speed occurs. Typically this falls under what is called the Weibull distribution, with a high peak early, and a tailing off at higher wind speeds.

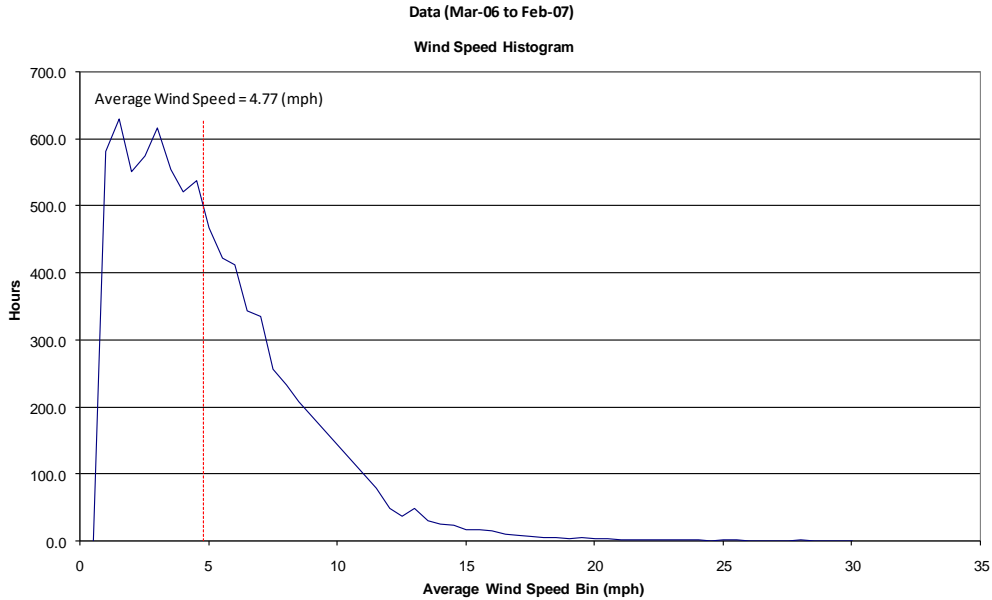


Figure E.7.4. Wind speed frequency over the year by # of hours.

### Wind Speed and Direction Trace

Figure E.7.5 shows the wind speed and wind direction reading for every ten-minute average over the course of the data. The wind speed data is the blue line, and the directional data are the red lines.

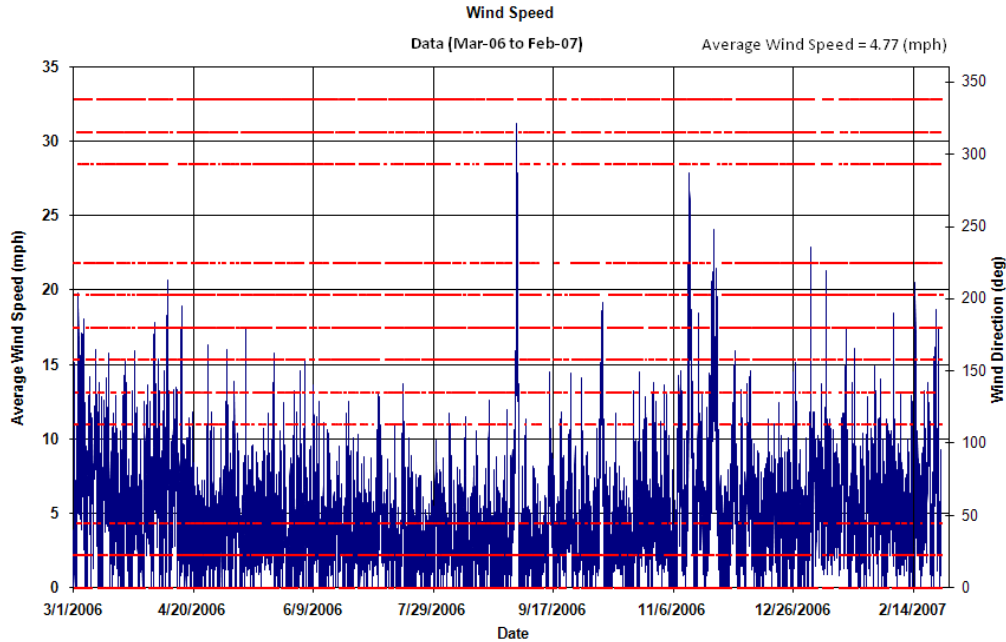


Figure E.7.5. Wind speed and direction readings throughout the year.

### Wind Daily Averages

Figure E.7.6 shows the average wind speed and direction by day of the month. Notice there is no particular trend here.

*Note: This graph will not be meaningful if more than one month of data is plotted*

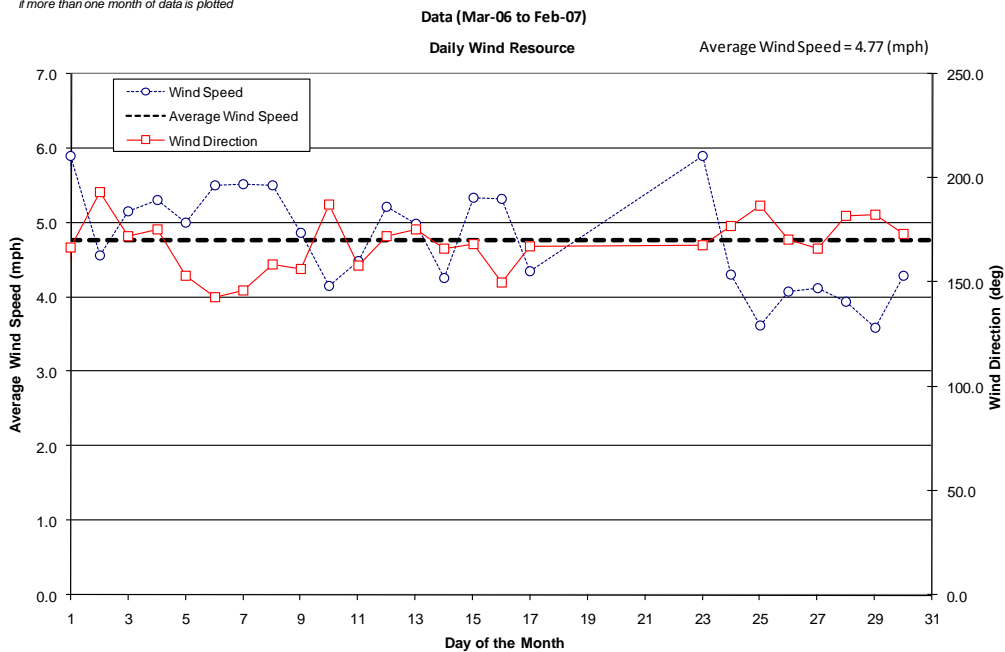


Figure E.7.6. Wind speed and direction averages by day of the month.

### Wind Speed Occurrence by Direction

Figure E.7.7 displays the average wind speed for each direction the wind comes from. It also shows the percent of time in that direction bin. The highest wind speeds come from the north and south for this site.

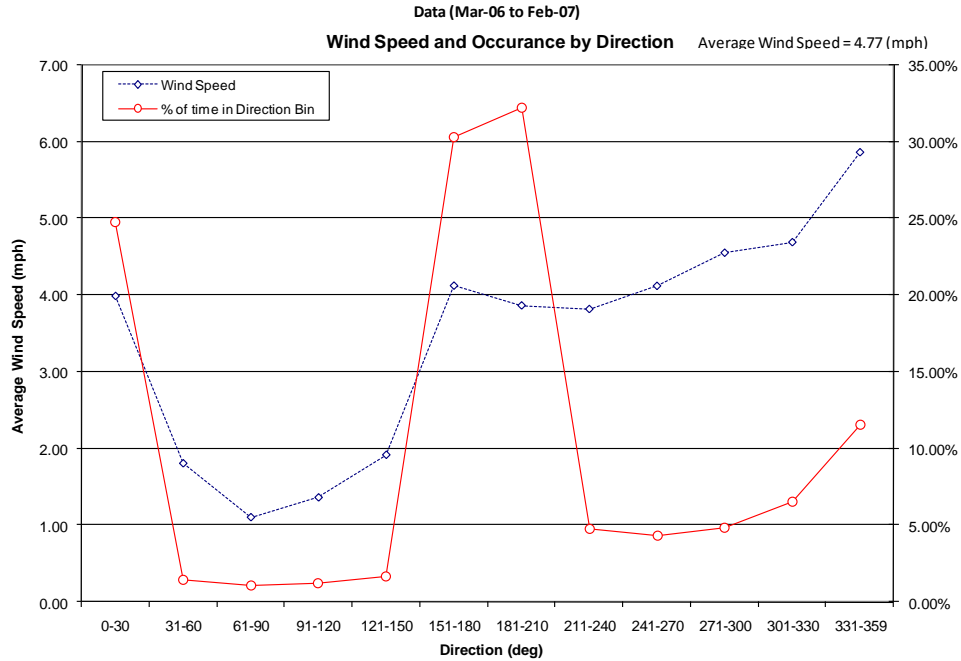


Figure E.7.7. Average wind speed for each direction bin and % time in that bin.

### Frequency Wind Rose

Figure E.7.8 displays a frequency wind rose. The largest portion of the wind comes from the south and the north.

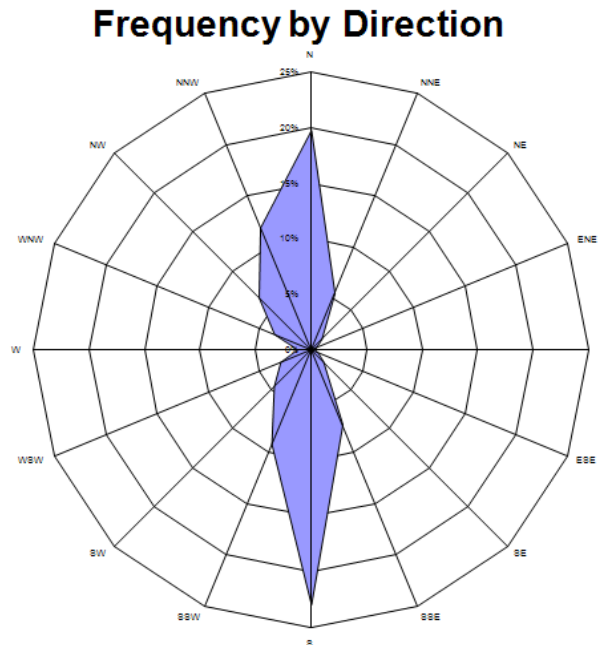
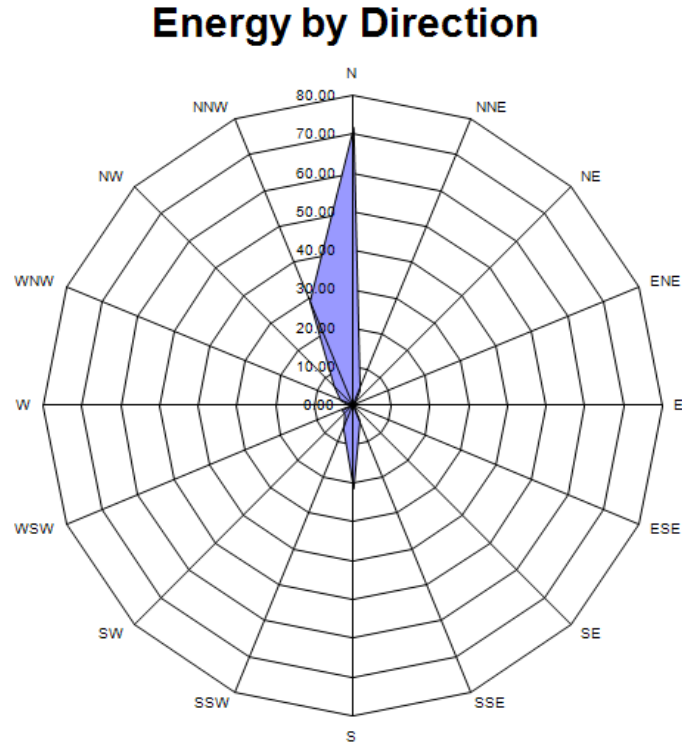


Figure E.7.8. Wind rose displaying wind direction frequency.

## Energy Rose

Figure E.7.9 is an energy wind rose, showing the number of kWh/m<sup>2</sup> available from 16 compass-point directions. The largest portion of energy comes from the northern region. This is due to the higher wind speeds from this direction and the combination of a high frequency of occurrence of these winds.



**Figure E.7.9.** Energy wind rose with units in kWh/m<sup>2</sup>.